

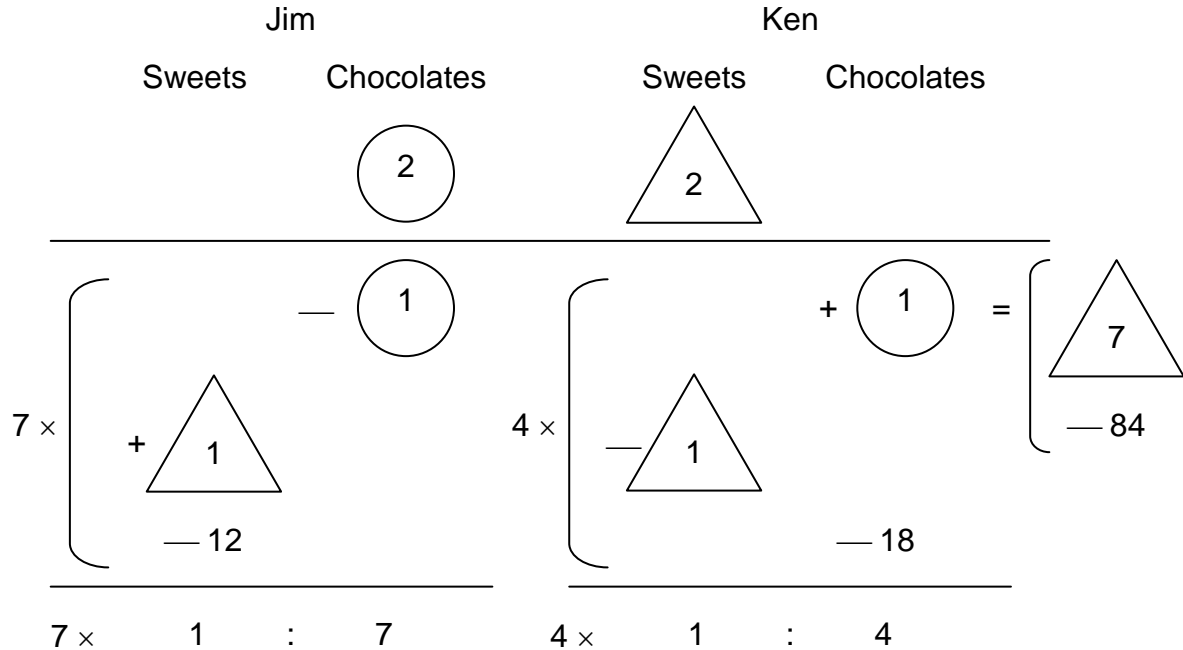
## A Maths Question, PSLE 2009

Jim bought some chocolates and gave half of it to Ken. Ken bought some sweets and gave half of it to Jim. Jim ate 12 sweets and Ken ate 18 chocolates. The ratio of Jim's sweets to chocolates became 1 : 7 and the ratio of Ken's sweets to chocolates became 1 : 4. How many sweets did Ken buy?

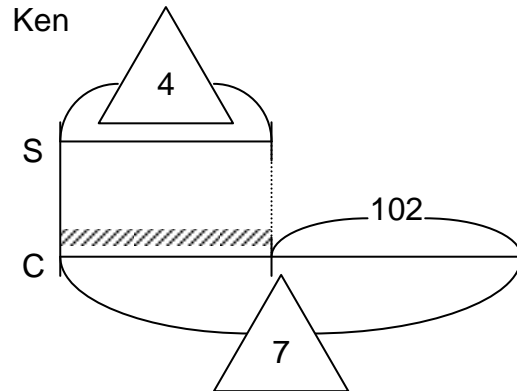
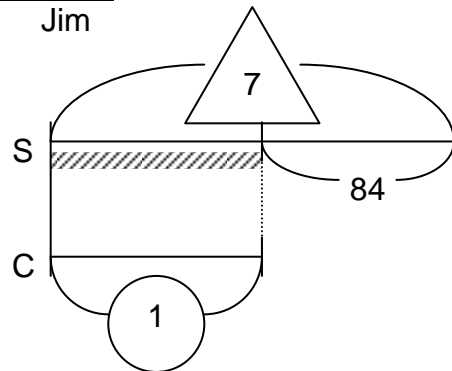
The number of chocolate Jim bought → 2 circles

The number of sweets Ken bought → 2 triangles

G. R.



Diagram



Writing

2 circles – 1 circles = 1 circle

7 × 1 triangle = 7 triangles

7 × 12 = 84

7 triangles – 84 → 1 circle → The number of chocolates Ken received

2 triangle – 1 triangle = 1 triangle

4 × 1 triangle = 4 triangles

84 + 18 = 102

7 triangles – 4 triangles = 3 triangles

102 ÷ 3 = 34 → 1 triangle

2 × 34 = 68 → 2 triangles

Ans. Ken bought 68 sweets.